



# Exchange Student Guidebook

CONTENTS	PAGE
General Information	1
Calendar	2
Academic Information	2-7
Housing Information	8
Financial Matters	9
Visa Application	10
Arrival Information	10-11
Application	12-13

# SHIMANE UNIVERSITY



## General Information

Name of institution	SHIMANE UNIVERSITY
Name of the head / Title	Yasunao HATTORI, Ph.D. President
Country / City	Matsue and Izumo, Shimane JAPAN
Campus	2 campuses (Matsue and Izumo) *Faculty of Medicine is located in Izumo Campus.
URL	<a href="http://www.shimane-u.ac.jp/">http://www.shimane-u.ac.jp/</a>
URL for int'l student exchange	<a href="http://kokusai.shimane-u.ac.jp/">http://kokusai.shimane-u.ac.jp/</a>

### Responsible person of international exchange

Akira DEGUCHI, PhD. (Mr.)

Director

Center for International Exchanges

Office hours 08:30 - 17:15

Contact for student exchange  
International Student Section of the  
International Exchange Division

Telephone (+81-852-32-6106)

Fax (+81-852-32-6481)

E-mail

([ied-ryugaku@office.shimane-u.ac.jp](mailto:ied-ryugaku@office.shimane-u.ac.jp))

### Name of international office

Toru TAKUWA (Mr.)

Head

International Exchange Division

Contact for int'l agreement  
International Cooperation Section of the  
International Exchange Division

Telephone (+81-852-32-9735)

Fax (+81-852-32-6481)

E-mail

([ied-koryu@office.shimane-u.ac.jp](mailto:ied-koryu@office.shimane-u.ac.jp))

## Calendar Information

### Academic system

#### Semester System

\*Semester 1: April - September  
term exam: late Jul.

summer break: Aug. – Sep.

\*Semester 2: October – March

winter break: late Dec. - early Jan.

term exam: late Jan.

spring break: Feb. – Mar.

### Fiscal year

From 1 April to 31 March

### Arrival dates for exchange students

Semester 1: early April

Semester 2: late September

### Orientation for int'l students

Semester 1: early April

Semester 2: early October

## Academic Information

### Academic levels offered to exchange students

Undergraduate, Master level and PhD level.

\* There are special courses offered to international students in Japanese Studies

### Classification of international exchange student status at Shimane University

Exchange students from partner universities shall be enrolled at Shimane University as a non-degree (non-regular) student under the following category.

## Category of Exchange Students



Category	Description	Credits
Special Auditing Students – undergraduate ( □ □ □ □ □ □ □ □ )	International exchange students who are admitted to particular undergraduate classes. They receive credits after passing final examinations.	○
Special Auditing Students –graduate ( □ □ □ □ □ □ □ □ □ )	International exchange students who are admitted to particular graduate classes. They receive credits after passing final examinations.	○
Special Research Students -graduate only ( □ □ □ □ □ □ □ □ □ )	International exchange students who are admitted to conduct particular research projects under a research advisor. They receive research certificates after completing their projects.	---

### *Language instructed in the courses offered to exchange students*

Most of the classes are provided in Japanese for undergraduate course, but there are a few classes offering in English for Master and Doctor's course:

MA/PhD courses in Earth & Geoenvironmental Science / MA course in Environmental Science (Special Courses for International Students)

“Special Research Students” may be instructed in English by advisor depending on research.



## Classes exchange students can register for

Exchange students ("Special Auditing Students") can register for regular classes provided by Shimane University. (JLPT Level N3 or its equivalent preferred.)

For further detailed information, please see the separate sheet entitled "Outline for the Japanese studies and other classes ---for International Exchange Students."

## Language requirement for exchange students

\* JLPT Level N3 or its equivalent preferred.

Japanese language credit courses for international students are divided into three levels; Elementary, Intermediate, and Advanced. There is no Japanese credit course for those who haven't studied Japanese at all. Non-credit introductory and elementary Japanese Language supplementary classes are offered for students who don't have enough Japanese proficiency. The certification of completion will be issued for the students who have attended more than two-thirds of the course.

\* Those who wish to be enrolled in the Special Courses for International Students stated above are required to submit English proficiency certificates such as TOEFL and IELTS.

## Requirements of study hours for exchange students

Exchange students must enroll for a minimum of 10 hours of class (seven courses) for a week as required by Japanese immigration regulations.

## Faculty & department

There are six faculties:

- 1) Faculty of Law & Literature
- 2) Faculty of Education
- 3) Faculty of Human Sciences
- 4) Faculty of Medicine
- 5) Interdisciplinary Faculty of Science and Engineering;
- 6) Faculty of Life and Environmental Science.

Departments:

- 1) Law and Economics, Socio-cultural Studies, and Language & Culture
- 2) Elementary Education, Special Support Education, Language Education, Education of Social and Cultural Studies, Natural Science Education, Fundamental Mathematics Education, Health and Physical Education, Music Education, Art Education
- 3) Human Sciences
- 4) Medicine, Nursing
- 5) Physics and Materials Science, Chemistry, Earth Science, Mathematics, Information Systems Design and Data Science, Mechanical, Electrical, and Electronic Engineering, Architectural Design
- 6) Life Sciences, Agricultural and Forest Sciences, Environmental and Sustainability Sciences

For further information, please see "Shimane University Prospectus".

(English)

[https://kokusai.shimane-u.ac.jp/english/study\\_abroad/prospectus.html](https://kokusai.shimane-u.ac.jp/english/study_abroad/prospectus.html)

# Events around Matsue city

Students registering Japanese courses may join in these fieldtrips and activities as a part of the courses.

★are the trips open to all the international students.

- Oct. Matsue festival Do Gyoretsu  
Visit to Adachi Museum  
(Japanese garden)
- Nov. Visit to Izumo Shrine  
Iwami Kagura
- Dec. Morotabune Shinto ritual  
Soba making
- Jan. Visit to Matsue History Museum
- Feb. Green Tea factory trip  
Ski Trip to Mt. Daisen★
- Mar. Visit to Soy sauce store-house  
Wagashi making
- Apr. Aofushigaki Shinto ritual  
Doll Festival in Yasugi  
Cherry Blossom Meeting
- May Hunting for fireflies  
Visit to Yuushien (Japanese garden)
- Jun. Visit to Gessyo temple  
(Hydrangea temple)
- Sep. Field trip to Ohnan Town,  
Shimane Prefecture★  
Matsue Lantern Festival

Japanese Tea Culture Experience



Kimono experience



National Treasure Matsuejo Castle



\*The above is subject to change depending on the year.

# Events of Shimane University



## International Students Party in December

## Field trips for International Students

They are held by the Center for International Exchange of Shimane University which will provide you with some financial aid.

Field Trip to Ohnan town



4-day trip in September

Participation fee: about 2,000yen

- Farm Stay
- Interaction with local people
- Visit to a local High school and an Elementary School
- Visit to a Sake Brewery
- Kagura Event (Traditional Shinto-Dance)

This trip will enable you to learn traditional Japanese culture and lifestyle.



## Ski Trip to Mt. Daisen

2-day trip in February

Participation fee: about 7,500yen

Mt. Daisen has the ski area that boasts the largest scale in Western Japan. You can experience skiing and get close interaction with participating students. This trip will provide you with a good chance to enjoy the beautiful nature of the winter in Japan.



# Housing Information

## Housing arrangement & allocation

International Exchange Division will try to make housing arrangements and assignment. Exchange students will be given priority to be allocated in the University International House upon demand of the student. If rooms are full, International Office will allocate students in the Student Dormitory or help them to find an off-campus accommodation.

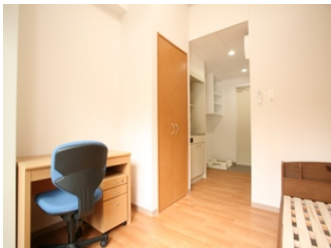


### International House (Matsue Campus)

<Number of rooms> 26 rooms for single, and  
1 room for married couple

- \* 5 minute walk to campus (2 mins by bicycle.)
- \* Residents share cooking facilities, shower rooms, and laundry facilities. (There is no meal plan system.)
- \* All the rooms are furnished. (bed, desk, chair, bookshelf, wardrobe, washbasin and toilet) Each room has a telephone hookup.
- \* Residents will have to buy a set of linens, pillows, blankets, futons, etc.

## Cost



Univ. Int'l House: 5,900 yen (monthly) for single room, communal expenses, and utility expenses, including electricity, gas, and water.

Student Dormitory: 4,000 - 24,000 yen (monthly) for single room, communal expenses, and utility expenses, including electricity, gas, and water.

Off Campus: Approximately monthly rent will be 20,000 - 50,000 yen for an en suite room. In addition to a rent, a resident needs to pay communal expenses and utility expenses, including electricity, gas, and water.

## Student Cafeteria

There is no cafeteria or dining hall in the dormitory. Two cafeterias on campus offer a wide range of foods including Halal menus.

# Financial Matters

## Cost of living

Approximately 60,000 yen per month for on-campus resident and 100,000 yen per month for off-campus resident are considered the minimum that should be available.

On arrival, students should bring some cash at least 150,000 yen to 200,000 yen with you for settling in for the first month in Japan.

Exchange students should be responsible for preparing sufficient financial support their own for studying and living in Shimane.

\* Tuition and fees in Shimane University shall be waived for exchange students, but they will pay regular tuition and related fees to their home university.

## National health insurance

Exchange students will be required to purchase national health insurance in Japan after their arrival. (approx. 2,000 yen per month.)

## Overseas travel & accidents insurance

Exchange students are also strongly recommended to bring an additional adequate insurance which covers travel and accidents.

## Disaster & accident insurance for students

Exchange students are recommended to purchase "Disaster and Accident Insurance for students" which covers accidents during study, research and university activities. Exchange students can apply for this insurance in the university after their arrival. (950-1,200 yen per year, depending on affiliated faculty.) Please ask at Student Support Division for details and application after arrival.

# Visa Application

## Application procedure

Exchange students must apply for a visa at the nearest Japanese embassy or consulate before departing. Exchange students must apply for a “Student” visa status at the Japanese embassy/consulate in the country.

International Student Section of Shimane University will send a “Certificate of Eligibility” issued by the Japanese immigration office to each exchange student through the international office of the partner university. Students need to apply for a visa with the necessary documents including a Certificate of Eligibility and Notice of Acceptance.

# Arrival Information

## Pick-up service on arrival

Yes, on demand of the student.  
\* Please note that an exchange student should be responsible to reach at Matsue Station.

## Name of closest airport

Izumo Airport or Yonago Airport  
\*Izumo: domestic flights are only available.  
Yonago: domestic flights and some international flights available.  
\*It will take about 40 mins by bus from either airport to get Matsue campus.

## Transportation from int'l airports

1. From Kansai International Airport (KIX)
  - (1) Fly to Izumo Airport from Itami Airport (Domestic flight)
    - ① KIX to Osaka/Itami Airport: 90 mins by bus  
[http://www.okkbus.co.jp/en/timetable/kix/t\\_itm.html](http://www.okkbus.co.jp/en/timetable/kix/t_itm.html)
    - ② Osaka/Itami Airport to Izumo Airport: 1 hour-flight  
<http://osaka-airport.co.jp/en/flight/flightscheduleresult/?airport=IZO>
    - ③ Izumo Airport to Matsue Station: 30 mins by bus  
<http://www.ichibata.co.jp/taxi-matsue/shuttle/index.html>
  - (2) To Matsue station by train: about 5 hours  
Kansai airport~Osaka~Shin-Osaka~Okayama~Matsue  
<http://www.kansai-airport.or.jp/en/access/train/index.html>  
<https://www.jr-odekake.net/>
  - (3) To Matsue station by bus: about 5 hours  
Kansai airport~Osaka Sta. (Shin-Hankyu Hotel)  
Hankyu-Sanbangai Bus terminal (Hankyu-Umeda)~Matsue  
<http://www.kate.co.jp/en/timetable/index>  
<http://bus.hankyu.co.jp/highway/route/timetable/highway16.php>

2. From New Tokyo International Airport (Narita-NRT)
  - (1) Fly to Izumo Airport or Yonago Airport (Domestic flight)
    - ① NRT to Tokyo/Haneda Airport: 90 mins by bus  
<http://www.limousinebus.co.jp/en/>
    - ② Tokyo/Haneda Airport to Izumo or Yonago Airport:  
80 min-flight  
<http://jatns.tokyo-airport-bldg.co.jp/en/flight/domestic/>
    - ③ Izumo Airport to Matsue Station: 30 mins by bus  
<http://www.ichibata.co.jp/taxi-matsue/shuttle/index.html>
    - Yonago Airport to Matsue Station: 45 mins by bus  
<http://www.ichibata.co.jp/taxi-matsue/shuttle/yonago.html>

## Transportation Expenses

1. From Kansai International Airport (KIX)
  - (1)
    - ① Bus from KIX to Osaka/Itami Airport: 1,950 yen
    - ② Flight fare from Osaka/Itami Airport to Izumo Airport:  
about 15,000 yen~
    - ③ Bus from Izumo Airport to Matsue: 1,030 yen
  - (2) Train fare from KIX to Matsue: about 12,000 yen
  - (3) Bus fare from KIX to Matsue: about 7,000 yen
2. From New Tokyo International Airport (NRT)
  - ① Bus from NRT to Tokyo/Haneda Airport: 3,100 yen
  - ② Flight fare from Tokyo/Haneda Airport to Izumo Airport or  
Yonago Airport: about 19,000 yen~
  - ③ Bus from Izumo Airport to Matsue Station: 1,030 yen  
Bus from Yonago Airport to Matsue Station: 990 yen

# Application

Application  
deadline

Semester 1 (for starting Mar.): mid-November  
Semester 2 (for starting Oct.): early April

Application  
forms &  
necessary  
documents

**【Documents for Admission to Shimane University】**

- (1) Foreign Special Auditing/Research Student Application Form (form provided)
- (2) Course Request Form (form provided)
- (3) Personal Information (form provided)
- (4) Personal History (form provided)
- (5) Certificate of Health (form provided)
- (6) Recommendation letter from the dean of the faculty or the dean of the office
- (7) Academic transcript  
(Please attach an English or Japanese translation.)
- (8) Certificate of Enrollment  
(Please attach an English or Japanese translation.)
- (9) Study plan at Shimane University (form provided)  
(Please refer to attached Guidelines for making Study Plan.)
- (10) Documents to certify applicant's Japanese language proficiency if any

\* Those who wish to be enrolled in the Special courses for International Students stated above are required to submit English proficiency certificates such as TOEFL and IELTS.

## 【Documents for Immigration】

- (1) Application for Certificate of Eligibility (form provided)
- (2) 2 Photographs
- (3) Photocopy of passport
- (4) Pledge and certificate of current position of the financial supporter
- (5) Financial supporter's bank statement (Deposit balance statement)  
\*The statement must indicate the deposit has more than JPY 1,500,000 to cover living expenses and travel costs.
- (6) Copy of the financial supporter's ID card
- (7) Financial supporter's job certificate

\* The application materials will be distributed from the international office every October and February.

Send application  
to

International Student Section  
International Exchange Division,  
Shimane University  
1060 Nishikawatsu-cho, Matsue, Shimane  
690-8504 JAPAN  
Tel : +81-852-32-6106  
Fax: +81-852-32-6481

### ◆INQUIRIES◆

International Student Section  
International Exchange Division  
Shimane University  
1060 Nishikawatsu-cho, Matsue, Shimane  
690-8504 JAPAN  
Tel : +81-852-32-7023 Fax: +81-852-32-6481  
E-mail: [ied-ryugaku@office.shimane-u.ac.jp](mailto:ied-ryugaku@office.shimane-u.ac.jp)